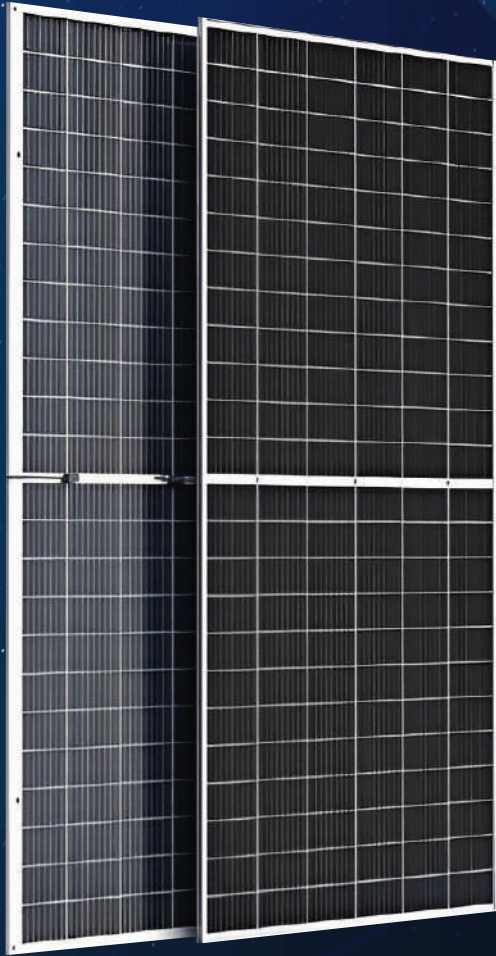


# LYNX


## HALF CUT N-TYPE TOPCON SERIES



### TUNNEL OXIDE PASSIVATED CONTACT HIGHER CELL EFFICIENCY

- Cutting-edge Technology For Maximizing Energy Generation.
- Minimum LID Loss
- Superior Efficiency For Maximum Power Output.
- Better Low Light Performance
- Quick & Hassle-free Setup, Saving Your Time & Money.
- Designed To Withstand Harsh Weather Conditions.
- Longtime Performance Warranty



- 30 years warranty of linear power output
- 12 years manufacturers warranty
- Warranty Insurance by Ariel Re 



Lower Degradation



Lower Temperature Coefficient



Higher Bifaciality Rate



Low Light Performance



Less Sensitive To Humidity

+91 74000 83000

@ sales@novasysgreen.com

www.novasysgreen.com

## N-TOPCON 144 CELL MODULES ELECTRICAL PARAMETER - STC

| Model Name                    | NOVA600TG144 | NOVA595TG144 | NOVA590TG144 | NOVA585TG144 | NOVA580TG144 | NOVA575TG144 | NOVA570TG144 | NOVA565TG144 | NOVA560TG144 | NOVA555TG144 | NOVA550TG144 |
|-------------------------------|--------------|--------------|--------------|--------------|--------------|--------------|--------------|--------------|--------------|--------------|--------------|
| Max Power-Pmax (W)            | 600.00       | 595.00       | 590.00       | 585.00       | 580.00       | 575.00       | 570.00       | 565.00       | 560.00       | 555.00       | 550.00       |
| Open Circuit Voltage-Voc (V)  | 53.60        | 53.45        | 53.32        | 53.27        | 53.20        | 53.12        | 53.04        | 52.96        | 52.87        | 52.79        | 52.68        |
| Short Circuit Current-Isc (A) | 14.17        | 14.11        | 14.05        | 13.97        | 13.89        | 13.81        | 13.74        | 13.66        | 13.58        | 13.49        | 13.41        |
| Maximum Voltage-Vmax (V)      | 44.19        | 44.15        | 44.10        | 43.99        | 43.92        | 43.73        | 43.62        | 43.50        | 43.38        | 43.10        | 42.91        |
| Maximum Current-Imax (A)      | 13.58        | 13.48        | 13.38        | 13.30        | 13.21        | 13.15        | 13.07        | 12.99        | 12.91        | 12.88        | 12.82        |
| Fill Factor (%)               | 79.01        | 78.91        | 78.76        | 78.62        | 78.51        | 78.38        | 78.23        | 78.11        | 78.00        | 77.95        | 77.87        |
| Module Efficiency (%)         | 22.99        | 22.80        | 22.61        | 22.42        | 22.23        | 22.04        | 21.84        | 21.65        | 21.46        | 21.27        | 21.08        |

# Under Standard Test Conditions (STC) of irradiance 1000 W/m<sup>2</sup>, spectrum AM 1.5 and Module temperature of 25°C

## N-TOPCON 144 CELL MODULES ELECTRICAL PARAMETER - NOCT

| Model Name                    | NOVA600TG144 | NOVA595TG144 | NOVA590TG144 | NOVA585TG144 | NOVA580TG144 | NOVA575TG144 | NOVA570TG144 | NOVA565TG144 | NOVA560TG144 | NOVA555TG144 | NOVA550TG144 |
|-------------------------------|--------------|--------------|--------------|--------------|--------------|--------------|--------------|--------------|--------------|--------------|--------------|
| Max. Power-Pmax (W)           | 444.00       | 440.30       | 436.60       | 432.90       | 429.20       | 425.50       | 421.80       | 418.10       | 414.40       | 410.70       | 407.00       |
| Open Circuit Voltage-Voc (V)  | 50.25        | 50.11        | 49.99        | 49.94        | 49.88        | 49.80        | 49.73        | 49.65        | 49.57        | 49.49        | 49.39        |
| Short Circuit Current-Isc (A) | 11.46        | 11.41        | 11.37        | 11.30        | 11.24        | 11.17        | 11.12        | 11.05        | 10.99        | 10.91        | 10.85        |
| Maximum Voltage-Vmax (V)      | 41.43        | 41.39        | 41.34        | 41.24        | 41.18        | 41.00        | 40.89        | 40.78        | 40.67        | 40.41        | 40.23        |
| Maximum Current-Imax (A)      | 10.72        | 10.64        | 10.56        | 10.50        | 10.42        | 10.38        | 10.31        | 10.25        | 10.19        | 10.16        | 10.12        |

# Under Nominal Operating Cell Temperature (NOCT) of 20°C, spectrum 1.5AM, irradiance 800 W/m<sup>2</sup>

| Power Gain            | NOVA600TG144 | NOVA595TG144 | NOVA590TG144 | NOVA585TG144 | NOVA580TG144 | NOVA575TG144 | NOVA570TG144 | NOVA565TG144 | NOVA560TG144 | NOVA555TG144 | NOVA550TG144 |
|-----------------------|--------------|--------------|--------------|--------------|--------------|--------------|--------------|--------------|--------------|--------------|--------------|
| 10%                   | 660          | 655          | 649          | 644          | 638          | 633          | 627          | 622          | 616          | 611          | 605          |
| Power Output (W)      | 25.29%       | 25.08%       | 24.87%       | 24.66%       | 24.45%       | 24.24%       | 24.03%       | 23.82%       | 23.61%       | 23.40%       | 23.19%       |
| Module Efficiency (%) | 690          | 684          | 679          | 673          | 667          | 661          | 656          | 650          | 644          | 638          | 633          |
| 15%                   | 26.44%       | 26.22%       | 26.00%       | 25.78%       | 25.56%       | 25.34%       | 25.12%       | 24.90%       | 24.68%       | 24.46%       | 24.24%       |
| Power Output (W)      | 720          | 714          | 708          | 702          | 696          | 690          | 684          | 678          | 672          | 666          | 660          |
| Module Efficiency (%) | 27.59%       | 27.36%       | 27.13%       | 26.90%       | 26.67%       | 26.44%       | 26.21%       | 25.98%       | 25.75%       | 25.52%       | 25.29%       |
| 20%                   | 750          | 744          | 738          | 731          | 725          | 719          | 713          | 706          | 700          | 694          | 688          |
| Power Output (W)      | 28.74%       | 28.50%       | 28.26%       | 28.02%       | 27.78%       | 27.55%       | 27.31%       | 27.07%       | 26.83%       | 26.59%       | 26.35%       |
| Module Efficiency (%) | 780          | 774          | 767          | 761          | 754          | 748          | 741          | 735          | 728          | 722          | 715          |
| Power Output (W)      | 29.89%       | 29.64%       | 29.39%       | 29.15%       | 28.90%       | 28.65%       | 28.40%       | 28.15%       | 27.90%       | 27.65%       | 27.40%       |
| Module Efficiency (%) |              |              |              |              |              |              |              |              |              |              |              |

# Additional power gain from rear side compared to power of front side at STC depends on mounting structure (height, tilt angle etc.) and reflectivity of ground. BI-Facility Factor : 80 ± 5 %

## Temperature Ratings

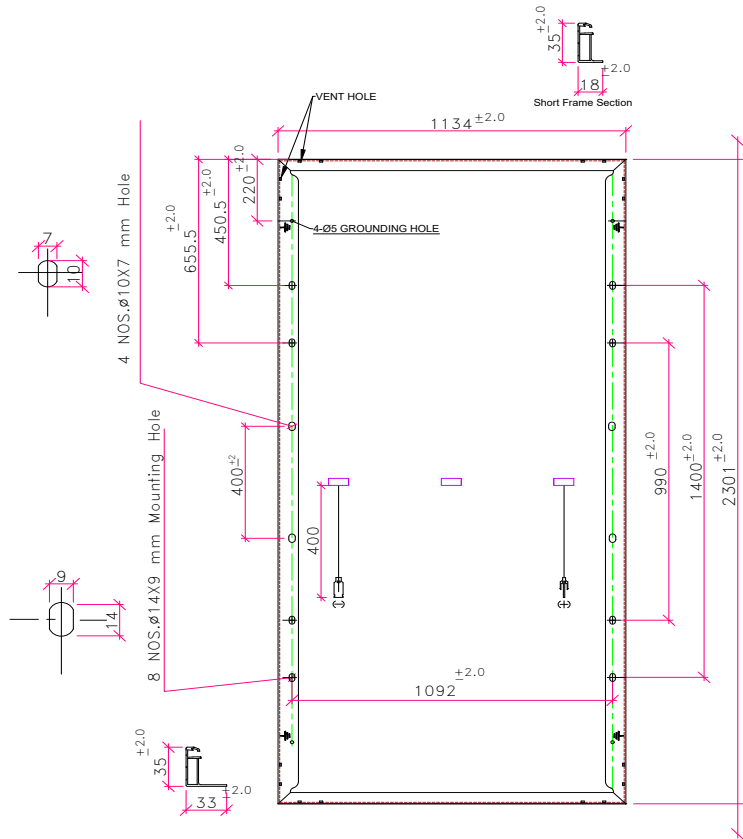
|   |            |
|---|------------|
| Nominal Operating Cell Temperature (NOCT) | 45°C ± 2°C |
| Temperature coefficients of Pmax          | -0.30%/°C  |
| Temperature coefficients of Voc           | -0.25%/°C  |
| Temperature coefficients of Isc           | +0.045%/°C |

## Mechanical Data

|                                    |                    |
|------------------------------------|--------------------|
| Dimensions (L x W x T) mm          | 2301 X 1134 X 35mm |
| Weight (Kgs)                       | 32±0.5             |
| Mounting Hole Distance (X-axis) mm | 1092               |
| Mounting Hole Distance (Y-axis) mm | Y1- 990 / Y2 -1400 |

## General Data

|                     |   |
|---------------------|---|
| Solar Cells         | 144 pcs N-type TOPCon cell, 16 BB   |
| Module Structure    | <ul style="list-style-type: none"> <li>Front Superstrate - ARC Tempered Glass 3.2 mm</li> <li>Back Substrate - Transparent Backsheet 1500V</li> </ul> |
| Frame               | Anodized Aluminum Alloy   |
| Junction Box        | Potted Split JB IP68  |
| Cable & Connector   | 4 Sq mm, 400 mm length with MC4 Connect   |
| Mechanical Strength | Suitable for 2400 Pa for wind load & 5400 Pa for snow load  |



## Maximum Ratings

|                                  |                               |
|----------------------------------|-------------------------------|
| Operating Temperature            | -40 ± 85°C                    |
| Maximum System Voltage           | 1500V                         |
| Maximum Series Fuse Rating       | 30 A                          |
| Application Classification       | Class A                       |
| Electrical Positive Tolerance(%) | 0 to +2% with Current Binning |

**Note:** Refer to module installation instructions for maximum loading configurations.

All mechanical dimension tolerance ± 2mm.

\*Listed specifications are subject to change without notice.

## Novasys Greenery Pvt. Ltd.

### Head Office & Works Address :

Kh. no. 185, Mauza: Mahalgaon, Tehsil: Kamptee, District: Nagpur, Maharashtra, India - 441202

Call: +91 -74000 83000

Long Frame Section

